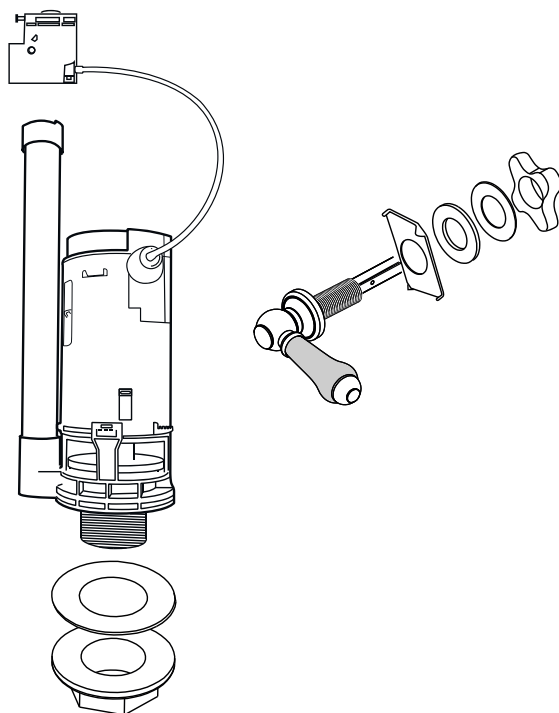


# TURNER HASTINGS

## MADE IN ENGLAND

---

### Close Coupled Toilet Lever Instructions Installation Instructions



#### **Important Information:**

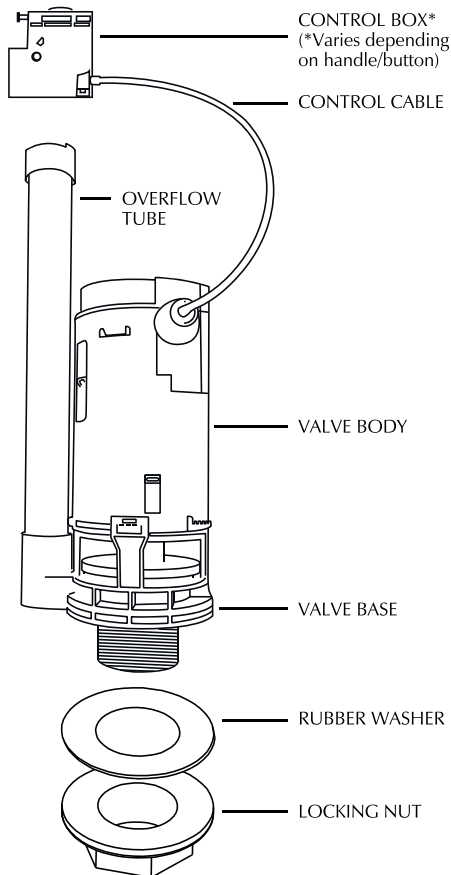
Please check the products for transport damage and that contents are complete before installation.

Consult a qualified plumber if you have any problems installing this product.

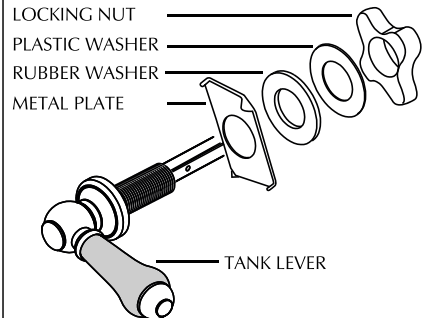
Complaints made following installation regarding the above cannot be accepted.

Flush valve parts

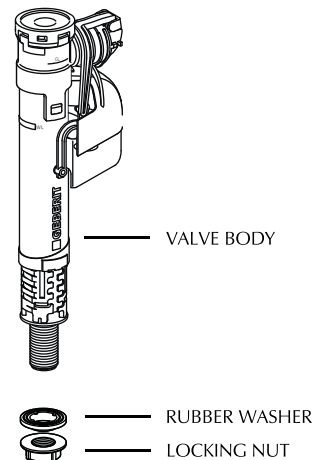
1. Flush valve



2. Lever



3. Geberit Bottom Inlet Valve



Please read this document prior to installation of your product.

Upon receiving your product please open all cartons carefully and inspect for any manufacturing defects. This installation guide and the fixings provided are intended for fixing into a solid floor. If you are installing this product into a non solid floor please amend your installation techniques and fixings accordingly.

### Tools required for installation



Hand Held  
Drill



Safety  
Goggles



Spirit Level



Tape  
Measure



Pencil



Adjustable  
wrench



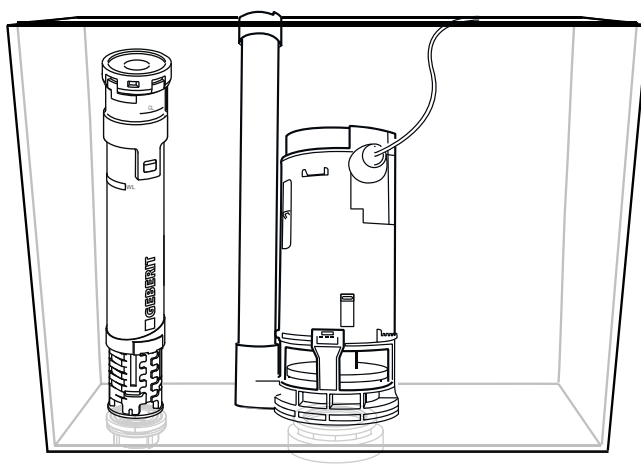
PTFE Tape



Silicon Gun

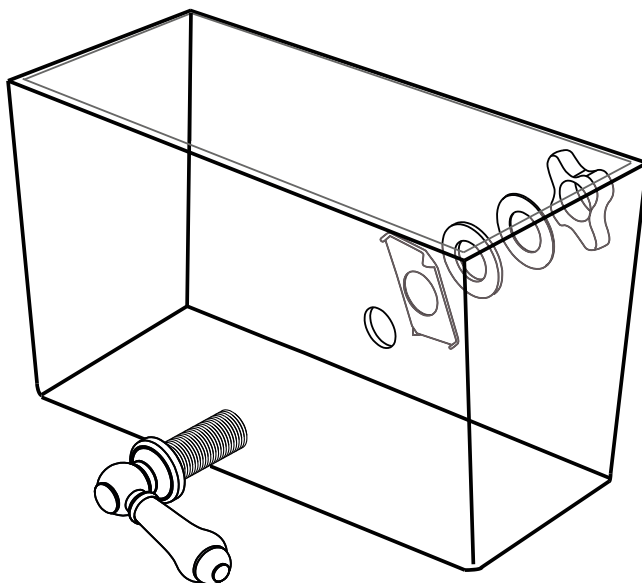
### 1. Valve in tank

Valves are pre-installed into tank prior to delivery. The flexible cable should always be allowed to bend gently without sharp changes in geometry.



**2. How to install a lever**

Please ensure that your cistern has the water inlet and flush valve installed.  
Insert nylon sleeve into cistern hole. Secure from the rear using metal plate, washers and back nut. Ensure back nut is fastened tightly to avoid handle coming loose. The hole in the cistern may be in the front or the side.

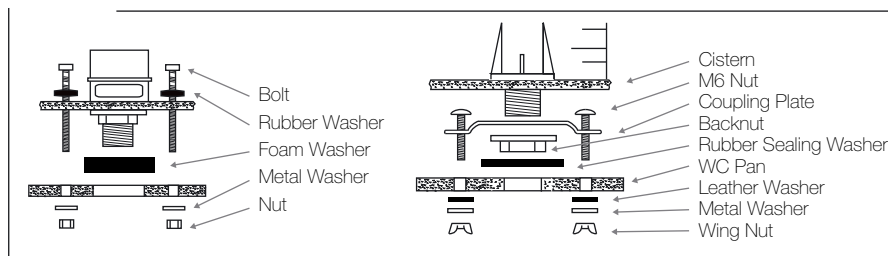
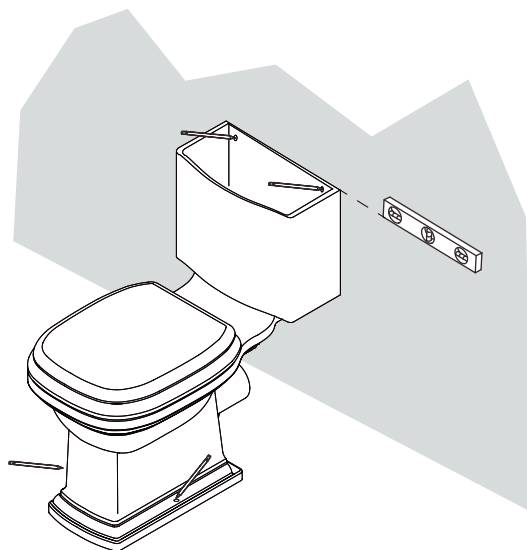


## 3. Installing a close-coupled toilet

Carefully measure and plumb in all necessary pipework prior to installing the toilet. Ensure that you have a clear space within which to work. Ensure that the installation of flush and filling valve is complete as instructed, and that all fittings are tested and in working order.

Insert the cistern bolts and locate the cistern correctly onto the pan as shown below. Once correctly positioned tighten wing nuts to ensure a secure connection to the WC pan.

Once the cistern is secured to the pan offer the toilet up to the desired position. Ensure that the cistern sits flat against the wall and is level and the foot of the pan is perpendicular to the wall using a pencil to mark around the foot of the pan and the fixing holes in both foot and cistern.

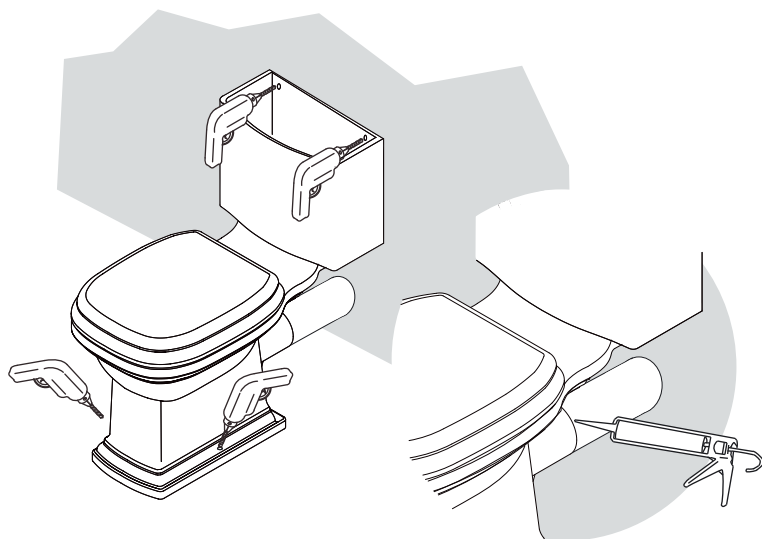



## 3. Installing a close-coupled toilet (continued)

Carefully measure and install all necessary pipework prior to installing the toilet. Ensure that you have a clear space within which to work. Remove the assembled toilet pan from the wall and drill the marked points. Insert the 8 x 60mm plugs for the floor fixing (solid floors only). Fixings for the cistern are not provided so please use suitable fixings for your wall type. Re-position the pan upto the wall and attach the waste pipe. Connect the water inlet pipe to the inlet valve. It may be advisable to use PTFE tape to help create a watertight seal between the inlet valve thread and the connecting nut.

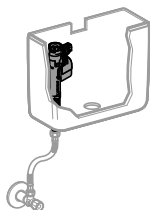
Secure the toilet pan to the floor/wall by using the fixings supplied/selected. It is advisable to run a bead of silicon around the joint between the WC outlet pipe and the waste pipe to ensure a good seal.

Assemble the flush handle to cistern lid and place into position. Once you are satisfied that the pan has been installed correctly and the fixings are adequately tightened switch on the water supply to the inlet valve and once the cistern is filled operate the flush cycle.



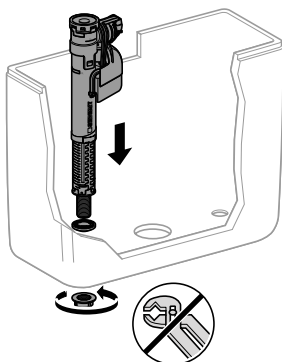
 Operate the flush cycle a few times and continually check carefully for signs of leaks from the inlet valve or toilet outlet if no leaks are evident, your toilet installation is complete

## 4. How to adjust a valve

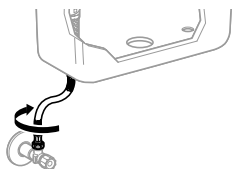


0,01 - 1 MPa  
(0,1 - 10 bar / 1,5 - 145 psi)

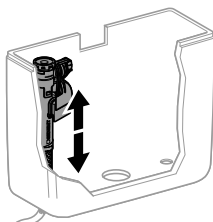
2



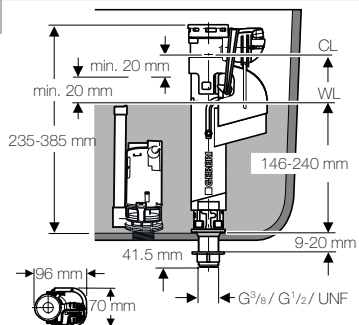
4



6



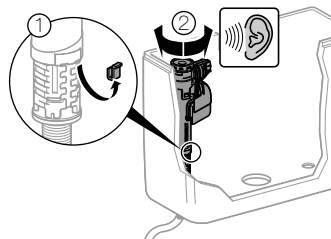
1



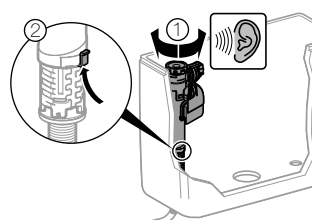
3



5

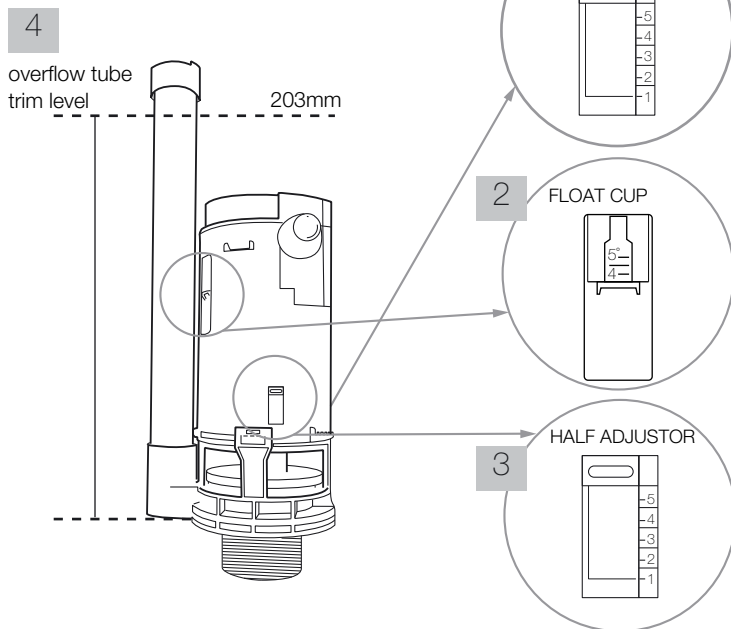


7



## 5. How to adjust outlet valve

Adjustment of FULL FLUSH volume:  
Full adjustor down – full flush volume increases.  
Full adjustor up – full flush volume decreases



Adjustment of HALF FLUSH volume:  
Float cup down – half flush volume increases  
Float cup up – half flush volume decreases  
NOTE: Press the clip to adjust the half adjusting float up and down

Half adjustor up - half flush volume decreases  
Half adjustor down - half flush volume increases

### SETTINGS FOR YOUR TOILET

		CC
1	Flush adjustor	½
2	Float cup	0
3	Half adjustor	2
4	Overflow trim	203mm

**NOTE:** Please refer to instruction booklet provided with your product or the label on a lid of the cistern for correct settings specific to your chosen wc suite.

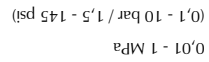


This image shows a full page of white paper with horizontal dotted lines, typical of primary school handwriting practice paper. The lines are evenly spaced and run across the width of the page. There are no margins, text, or other markings on the paper.

This image shows a full page of white paper with horizontal dotted lines, typical of primary school handwriting practice paper. The lines are evenly spaced and run across the width of the page. There are no margins, text, or other markings on the paper.







CAUTION: Before undertaking any drilling check fully for hidden

wires/pipework within the floor/walls.

5) Remove the assembled WC pan from the wall and drill the marked points. Insert the 8 x 60mm grey plugs for the floor/fixing (solid floors only). Fixings for the cistern are not provided so please use suitable fixings for your wall type.

6) Re-position the pan upto the wall and attached the waste pipe.

7) Connect the water inlet pipe to the inlet valve. It may be advisable to use PTFE tape to help create a watertight seal between the inlet valve thread and

the connecting nut (not supplied)

8) Secure the WC pan to the floor/wall by using the fixings supplied/selected.

9) It is advised to run a bead of silicon around the joint between the WC outlet

pipe and the waste pipe to ensure a good seal.

10) Assemble the push button to the cistern lid and place into position.

11) Once you are satisfied that the pan has been installed correctly and the

fixings are adequately tightened switch on the water supply to the inlet valve

and once the cistern is filled operate the flush cycle.

12) Operate the flush cycle a few times and continually check carefully for

signs of leaks from the inlet valve or WC outlet if no leaks are evident your WC

installation is complete.

Fig 1.4

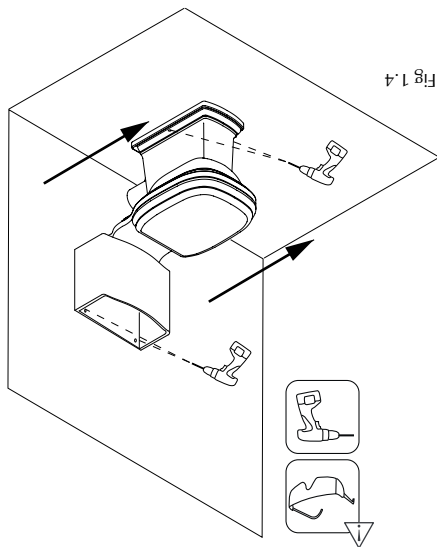
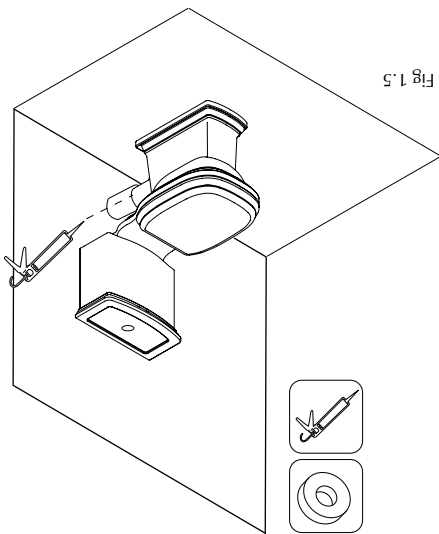
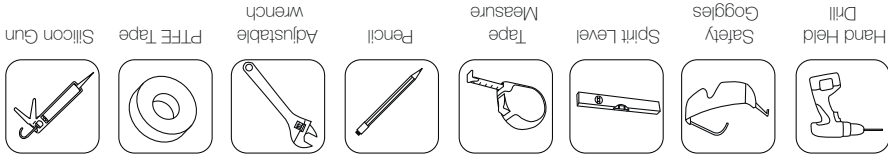


Fig 1.5



Please read this document prior to installation of your product.  
Upon receiving your product please open all cartons carefully and inspect for any manufacturing defects. This installation guide and the fixings provided are intended for fixing into a solid floor. If you are installing this product into a non solid floor please amend your installation techniques and fixings accordingly.

#### Tools required for installation



1) Carefully measure and plumb in all necessary pipework prior to installing the toilet. Ensure that you have a clear space within which to work.

2) Following the correct procedures for the type of flush kit included install the inlet and outlet valves as shown fig 1.1.

3) Insert the cistern bolts and locate the cistern correctly onto the pan as shown in fig 1.2.

Once correctly positioned tighten wing nuts to ensure a secure connection to the WC pan.

4) Once the cistern is secured to the pan offer the WC up to the desired position. Ensure that the cistern sits flat against the wall, is level and the foot of the pan is perpendicular to the wall use a pencil to mark around the foot of the pan and the fixing holes in both foot and cistern (fig 1.3).

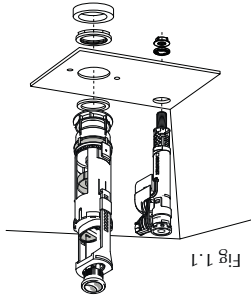


Fig 1.1

For full technical information relating to the inlet/outlet valves go to -<http://www.gebent.com.au>

#### Cistern Fixing Styles

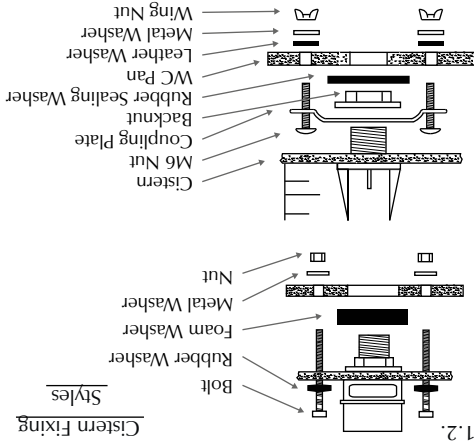


fig 1.2.

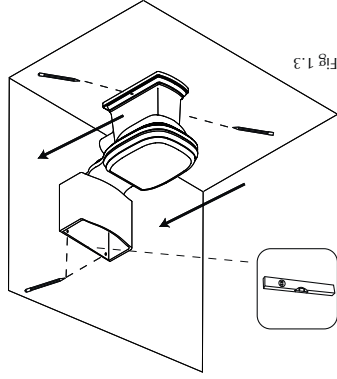
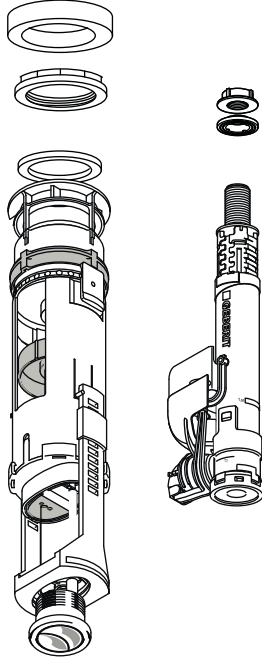


Fig 1.3

# TURNER HASTINGS

MADE IN ENGLAND

Close Coupled Toilet  
Push Button Instructions



## Important Information:

Please check the products for transport damage and that contents are complete before installation.  
Consult a qualified plumber if you have any problems installing this product.  
Complaints made following installation regarding the above cannot be accepted.